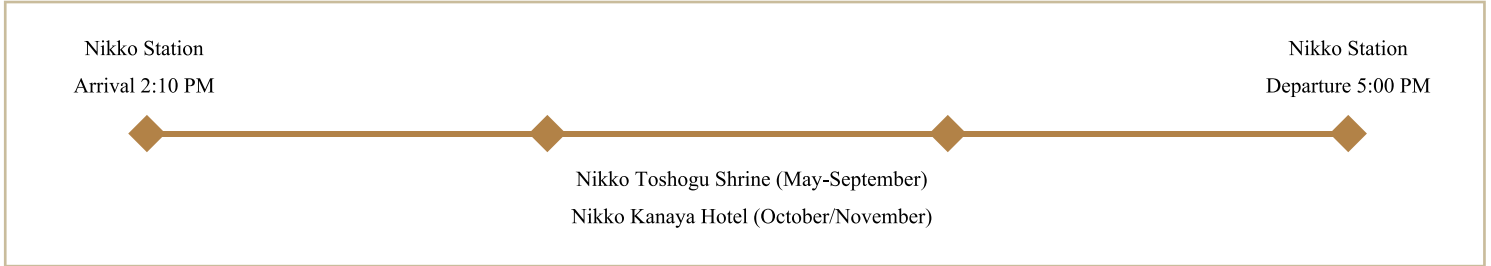


**Stopover 1: Nikko (Tochigi Prefecture), Day 1**



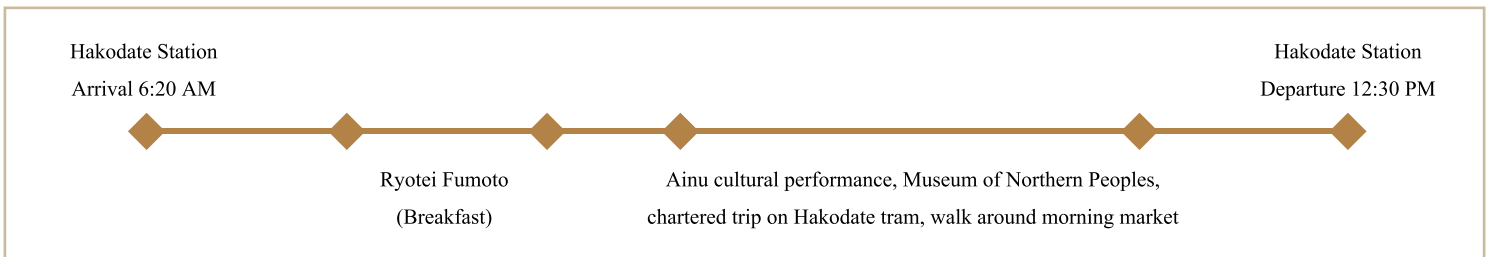
**Nikko Toshogu Shrine (May-September),  
Nikko Kanaya Hotel (October/November)/Nikko Station**

Pray for a good journey at Nikko Toshogu Shrine, a World Heritage Site dedicated to Tokugawa Ieyasu, a leader who brought peace and stability to Japan. You'll take a special tour just for Train Suite Shiki-shima passengers. (May-September.)

The Nikko Kanaya Hotel is one of the oldest classic hotels in Japan, with a history of around 140 years. Enjoy a tour of the hotel that traces the origin of the building's Toshogu Shrine motif and looks back on a history full of diplomatic visits. (October/November.)

On your return to Nikko Station, you can relax in the VIP room or explore the White Room, a beautiful former first class lounge with plaster walls and a chandelier.

**Stopover 2: Hakodate (Hokkaido), Day 2**



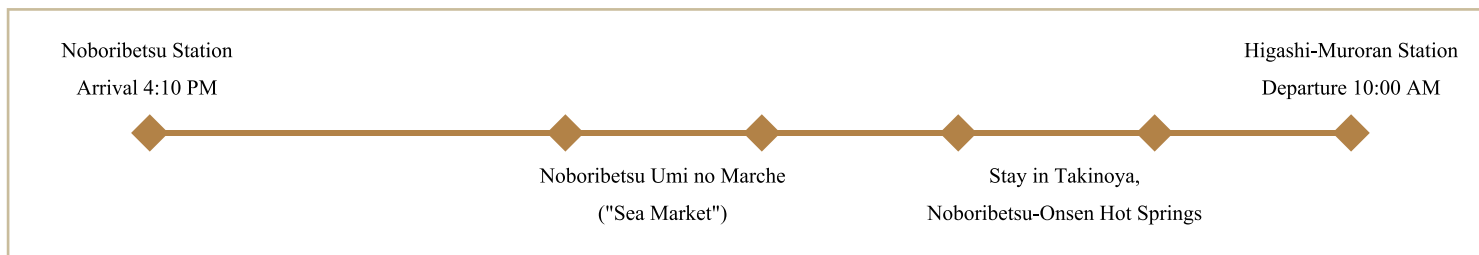
**Breakfast at Ryotei Fumoto  
Ainu cultural performance and visit to Museum of Northern Peoples  
Chartered trip on Hakodate tram, walk around morning market**

Located right next to the Tsugaru Strait between Hokkaido and the Japanese mainland, Hakodate has been a place of flourishing trade with Aomori on the other side of the strait since the Jomon Period (14,000-300BC). Various indigenous cultures made their way here from northern regions. Hakodate then became the gateway to Japan with the arrival of Commodore Perry in 1854, giving rise to significant development. Picture scrolls provide you with fascinating information about the treasured traditions of the indigenous Ainu people and how Hakodate rose to prominence as an international city.

You'll then travel back to Hakodate Station on a Hakodate tram chartered especially for Train Suite Shiki-shima passengers. After arriving at Hakodate Station, you can walk around the Hakodate Morning Market at your leisure.

### Stopover 3: Datemombetsu Station (Hokkaido), Day 2/Higashi-Muroran and Toya (Hokkaido), Day 3

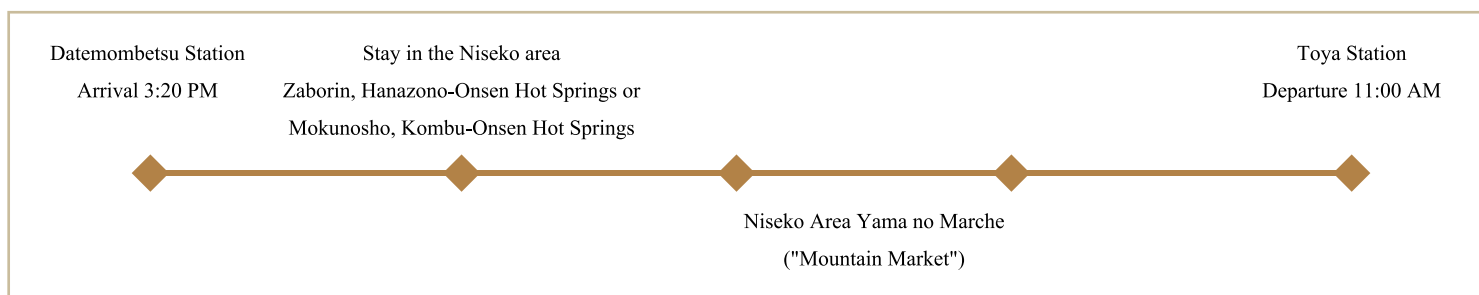
\*Attractions and schedule depend on where you choose to stay.



#### **Noboribetsu Umi no Marche ("Sea Market") (for passengers staying in Noboribetsu Hot Springs)**

Enjoy the sea breeze from Noboribetsu Fishing Port as you admire local crafts and watch the fishing boats come in with their tairyō-bata banners indicating a good catch. After that, you can enjoy specialty sweets from around Noboribetsu at the Wakasaimo flagship store, one of the most prominent confectioners in the Iburi area.

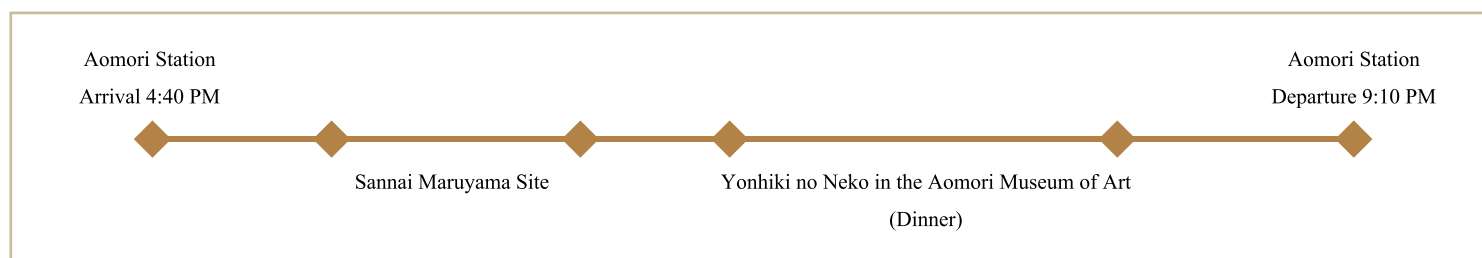
Photograph by Ryo Shirai



#### **Niseko Area Yama no Marche ("Mountain Market") (for passengers staying in the Niseko area)**

Spend the day at the Niseko Sahina Campground, recognized as the most comfortable campground in Japan. Here you can sample local specialties such as Niseko-grown produce, and hear the story of each specialty from the producers.

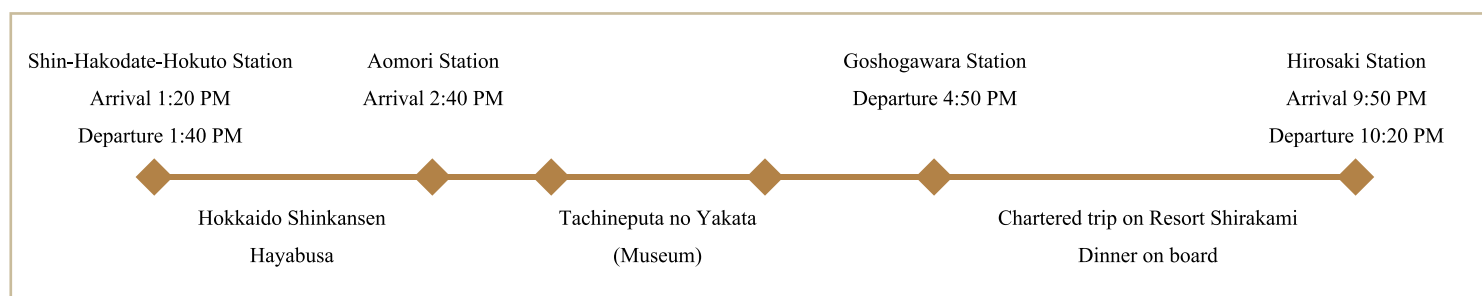
## Stopover 4: Aomori (Aomori Prefecture), Day 3 (Jomon Site Trip)



### Sannai-Maruyama Site and dinner at Yonhiki no Neko in the Aomori Museum of Art

Many remnants of life in the Jomon Period (14,000-300BC) can be seen in Aomori. With recreations of Jomon buildings, you can step 5000 years back in time on this special Train Suite Shiki-shima program. Dinner will be served in the restaurant Yonhiki no Neko, where you'll enjoy Aomori-style French food prepared by chef Masanori Kawaguchi from Hotel Jogakura at the foot of Mt. Hakkoda. The restaurant is located in the Aomori Museum of Art, which is home to a gigantic scene-painting of a ball by Chagall, and its menu is a nod to various artists.

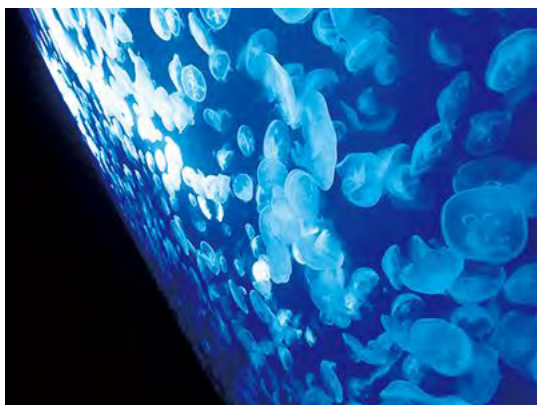
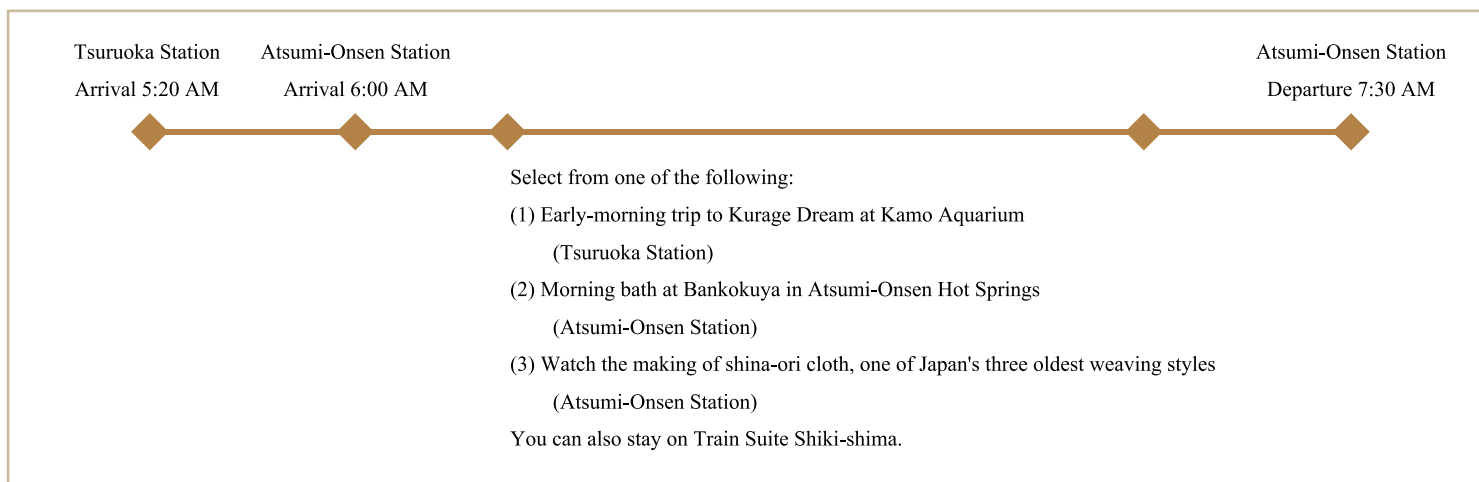
## Stopover 5: Shin-Hakodate-Hokuto (Hokkaido) and Hirosaki (Aomori Prefecture), Day 3 (Gono Line Trip)



### Trip on Hokkaido Shinkansen and Tour of Tachineputa no Yakata (Museum) Chartered trip on Resort Shirakami with dinner on board

Take a trip on the Hokkaido Shinkansen between Shin-Hakodate-Hokuto and Shin-Aomori and experience the Seikan Tunnel from a different vantage point to Train Suite Shiki-shima. At Goshogawara Station, you can view the grand 23m-high building of Tachineputa no Yakata up close. You'll then travel from Goshogawara to Hirosaki by a chartered trip on Resort Shirakami, a pioneering sightseeing train by JR East. As you watch the scenery go by outside the window, you'll enjoy a Hirosaki-style Italian appetizer by chef Michiaki Sasamori from Osteria Enoteca da Sasino, followed by a bento box prepared by Hiroki Takamura from Akita-based Japanese restaurant Nihon Ryori Takamura. This meal will give you an appreciation of the depth of Tohoku cuisine.

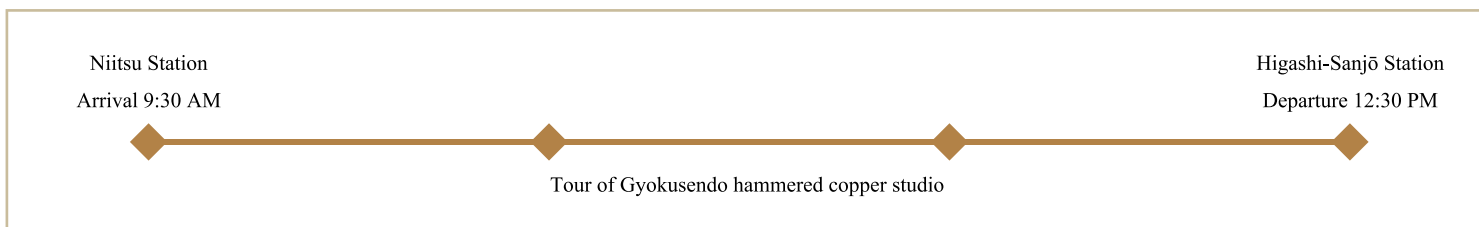
## Stopover 6: Tsuruoka and Atsumi Hot Springs (Yamagata Prefecture), Day 4



### Wake up and explore Shonai with one of three activities

You'll wake up at Tsuruoka Station, Yamagata Prefecture in the early morning. Watch jellyfish floating dreamily at Kamo Aquarium, enjoy a morning bath at Atsumi Hot Springs, a spring visited by many historic figures including famous poet Matsuo Basho, or watch the making of shina-ori cloth, one of Japan's three oldest weaving styles which uses thread made from tree bark fibers. After waking up on Train Suite Shiki-shima, enjoy the fresh morning air of the Shonai region.

## Stopover 7: Niitsu and Higashi-Sanjō (Niigata Prefecture), Day 4



### Experience the work of Japanese master craftspeople at Gyokusendo in Tsubame

Tsubame City in Niigata Prefecture is home to the masters of world-famous silverware, including the cutlery used at the party after the Nobel Prize ceremony. Gyokusendo is a hammered copper studio that has honed its skills in the cold wind and snow of Niigata, molding copper with a metal hammer for around 200 years. Spend the last day of your trip seeing one of Japan's world-famous crafting traditions up close in its elegant glory.